

WELCOME

We are so excited that you are coming to Camp Li-Lo-Li!

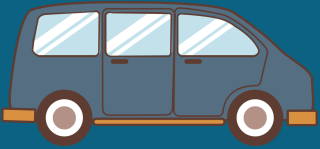


The following information will answer some questions and help you get ready for camp. Check out our website for additional information and answers to many frequently asked questions: www.liloli.org

Arrival & Departure

Arrival time is on Sunday from 1-3 pm. Please follow signs for registration once you arrive. Parking is provided. No lunch is served for arriving campers.

Pick-Up time is on Saturday from 10-11 am. The camp store will be open from 10am to noon with some food and beverage items available for purchase.



What to bring

- Pillows, sleeping bag or blankets
- Toiletries, towels
- Jackets, sweatshirts, rainwear
- Flashlights
- Bible, notebook and pens
- Insect repellent
- Bathing suit
- Extra shoes



For safety reasons, campers are NOT allowed to have cell phones or electronic devices at camp. No wifi is available. No knives or hunting equipment allowed.

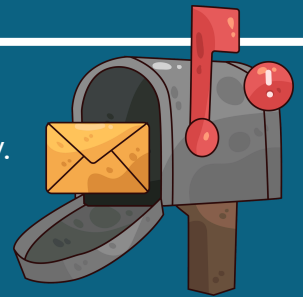


Clothing should be casual, comfortable, modest and suitable for various weather conditions and hiking. No bikinis, halter tops, spaghetti straps, etc. Camp reserves the right to determine what is modest apparel. Coin operated laundry facilities are available for camper use. Horseback riding and some ropes course activities require long pants & tie shoes.

Camp assumes no responsibility for lost items. Please label clothing & personal items and remember to check the lost & found tables before leaving camp!

Camper Mail

Mail to campers is welcome (except for food items) and will be distributed daily. The camp store has stamps, postcards & writing paper for outgoing mail.



Spending Money

Campers can make daily purchases at the camp store. Items available include souvenirs, T-Shirts, clothing items, candy, drinks, books, and novelty items. Spending money can be deposited online during the registration process. All payments must be in U.S. dollars.

Food Restrictions

If your camper has any food allergies or restrictions, we would love to talk with you BEFORE your arrival at camp. We are willing to work with the families to provide a safe, enjoyable eating experience, but families will probably need to provide some food items. Please contact registrar@liloli.org or foodservice@liloli.org



Medical Concerns

Camp has licensed medical staff and a well-equipped medical facility on the campgrounds to handle medical issues. There are also local hospitals in the area. Camp medical staff are responsible for dispensing all medications*. The New York State Health Department has these requirements:



- The **HEALTH CARE PROVIDER CONSENT** form or a similar written order must be provided, signed by a doctor, NP or PA for a camper to receive any **medication*** while at camp.
- All **medications*** for your child must be turned in to the medical staff on registration day in the original containers clearly labeled with the camper's name and instructions. No medications* are allowed in the cabins.

*** Medications cannot be dispensed unless these requirements are met.**

These include prescriptions, herbal, vitamins/supplements, over-the-counter

The parent/guardian will be notified by the camp nurse or director if a camper needs to be seen by a clinic, medical office or emergency room. In the event we cannot reach parent/guardian at the numbers provided, we reserve the right to leave a voicemail to communicate the need for the parent to call camp as soon as possible.

Camp Li-Lo-Li Head Lice Policy

Children are at risk of exposure to head lice when participating in activities where they are in close proximity to each other such as in schools and at camps. Therefore it is in the best interests of all campers that Camp Li-Lo-Li has a "no lice, no nits" policy. According to the New York State Health Department regulations, each child will be screened for lice by camp personnel upon arrival at camp. The "no lice, no nits" policy means that even if a child has recently been treated for lice, but is still found to have nits (lice eggs) or dead lice in the hair, that camper must be sent home. Therefore, it is very important that the task of combing all nits out of the hair be performed prior to arriving at camp.

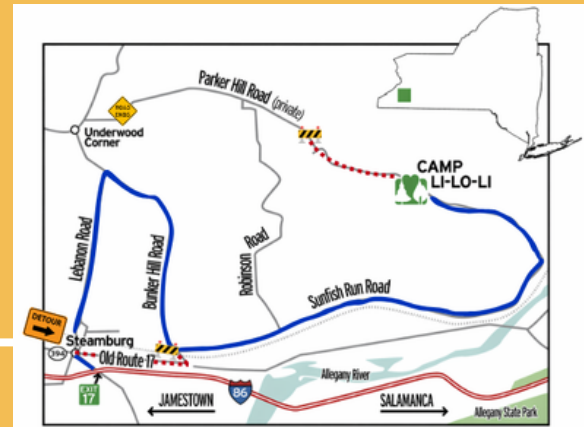
When NOT to send your child to camp:

- If the camper has had symptoms of any contagious illness within the week prior to arrival at camp. Please contact the registrar or medical director to determine the course of action needed.
- If the child has any head lice or nits

Directions to Camp

Travelling on Interstate 86, get off at Steamburg (Exit 17) and head north to the stop sign at Old Route 17. Continue straight on Lebanon Road and turn right onto Bunker Hill Road. Continue until you come to the Camp Li-Lo-Li sign at Sunfish Run Road. Turn left and continue until you arrive at camp!

DO NOT follow GPS down Parker Hill Road.



Camper fees

Camper fees can be paid in installments after application has been completed. Additional payments can be made (\$50 minimum per payment) by mail or on-line. Balance will be due upon arrival at camp. All payments must be in US dollars.

Camp Li-Lo-Li

8811 Sunfish Run Road.

Randolph, NY 14772

(716) 945-4900

registrar@liloli.org

www.liloli.org